

# Socket Serial I/O PC Card



## Give Your Mobile Computer a COM Port Running up to 921 kbps

Do you need to connect a serial device to your Windows or Linux notebook, but your notebook doesn't have a serial port? Or is the one serial port on your tablet PC not enough? Socket's Serial I/O PC Card makes it easy to add a high-speed RS-232 port to your mobile computer. Connect to devices such as digital cameras, GPS receivers, monitoring and control systems, data collection gear, writers for court reporting, lab equipment, and more. Windows recognizes the card as a standard COM port, so installation is a snap.



Want to transmit data at speeds up to 921 kbps? The Socket Serial I/O PC Card comes with Hi-Speed COM Tools and drivers that allow you to use serial applications at high COM port speeds. You can check the COM port number at a glance, and the user-friendly interface makes it easy to set up faster baud rates for your applications, including custom speeds like 230.4, 460.8 or 921.6 kbps. Windows 2000/XP users can even change the COM port number assigned to the card.

## Ultra Low Power is Perfect for Portables

The Socket Serial I/O Card uses only 13 mA on average, compared to 100 mA for other serial PC cards! Socket's unique low power design maximizes your mobile computer's battery life.

## Rugged Design for Industrial Use

The card comes in two versions, each designed for different needs. The standard Serial I/O PC Card has a removable cable and is designed for normal use. Socket also offers a "Ruggedized" version of the Serial I/O PC Card that features non-removable cables and a molded strain relief for more demanding industrial applications. All cables have a male DB-9 connector.



## FEATURES

- Compatible with devices running:
  - Windows Pocket PC 2003/2003SE
  - Windows XP, 2000, Me, 98SE
  - Windows 95 v4.00.050B
  - Linux Sharp Zaurus SL-5500, SL-5600
  - Red Hat Linux 9.0
- Works in Type II or III PC Card slot
- Hi-Speed COM Tools and drivers enable you to use your applications at high COM port speeds such as 230.4, 460.8 or 921.6 kbps
- Advanced features allow you to set custom baud rates. Check the COM port number at a glance. For Windows 2000/XP, you can even change the COM port assignment
- Available with a removable or "Ruggedized" cable with industry-standard DB-9 connector
- 16550 compatible UART provides internal data buffering to utilize the full bandwidth of RS-232 peripherals
- Hardware flow control, Plug & Play, and hot-swapping
- Works in both 3.3 V and 5 V systems
- CompactFlash version available for Pocket PCs and other devices
- Low power for longer battery life
- Custom cables that can supply 5 V from host PC to attached peripheral are available for OEMs (minimum quantity 1,000 units)
- RS-422, RS-485, and other custom serial protocols available for OEMs (minimum quantity 1,000 units)
- Limited lifetime warranty on plug-in card and ruggedized cable. 90 day warranty on removable cable
- DOS device drivers available for developers and OEMs (minimum quantity 1,000 units)

# Socket Serial I/O PC Card

## Serial I/O PC Card

with removable cable  
Product# SL0700-004



## Ruggedized Serial I/O PC Card

with fixed cable and molded strain relief  
Product# SL0707-078



## SPECIFICATIONS

### Physical Characteristics:

#### PC Card Size:

3.37 x 2.13 x 0.197 in (85.6 x 54 x 5 mm)

#### Removable Cable Length:

12 in (305 mm)

#### Ruggedized Cable Length:

17 in (432 mm)

#### Connector:

9-Pin D Shell Male

### Power Consumption:

**Standby:** 5 mA (25 mW)

**Typical:** 13 mA (65 mW)

### Interface Standards:

**PC Card Interface:** PC Card

(formerly PCMCIA) Type II, JEIDA 4.1

### Serial Communications:

Asynchronous RS-232

**Baud Rate:** Up to 921 kbps

*Custom options for RS-422, RS-485*

**Compatibility:** Windows COM port

### Operating System Support:

- Windows Pocket PC 2003/2003SE
- Windows 98, 98SE, Me, 2000, XP
- Windows 95 v4.00.950B
- Linux Sharp Zaurus SL-5500, SL-5600
- Red Hat Linux 9.0

### Warranty:

**PC Card and Ruggedized Cable:**

Limited lifetime

**Removable Cable:** 90 days

### Certification/Compliance:

**FCC:** Part 15, Class B

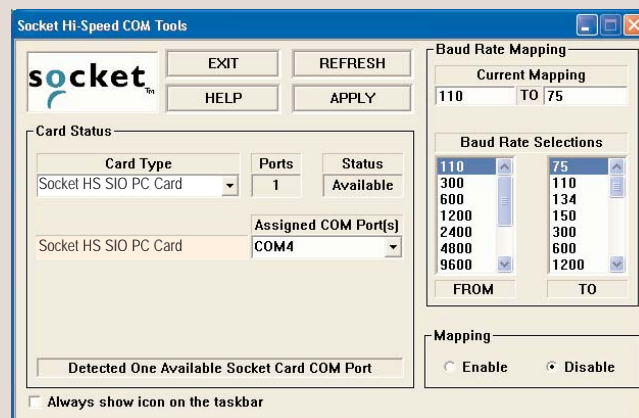
**CE:** EN55024:1998, C-TICK s.182

CompactFlash Spec. 2.0

**Telecom Approval:** FCC: Part 68, CTR 21

## HI-SPEED COM TOOLS

Versions available for Pocket PCs and Windows-based notebook/tablet PCs.



*Hi-Speed COM Tools (shown on Windows XP)*

## FOR ADDITIONAL INFORMATION

### Sales Offices:

#### Corporate Headquarters:

37400 Central Court, Newark, CA 94560

Phone: 510-744-2700

Domestic Toll Free: 800-552-3300

Fax: 510-744-2727

Online: [www.socketcom.com/contact](http://www.socketcom.com/contact)

Website: [www.socketcom.com](http://www.socketcom.com)

