

Socket CompactFlash Scan Card 5E



Turn Your Pocket PC, Handheld PC, Pen Tablet or Notebook into an **Entry Level** Mobile Bar Code Scanner

If you're a mobile professional using a Pocket PC, Handheld PC or Windows notebook for an application requiring Entry Level data entry, Socket's CompactFlash (CF) Scan Card 5E may provide an incredible increase in productivity.

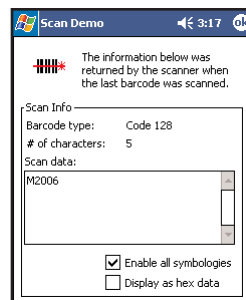
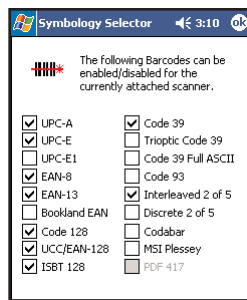
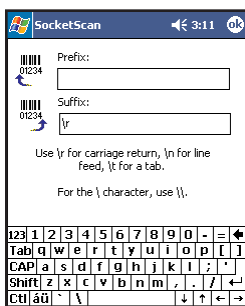
Virtual keyboards and handwriting/voice recognition are slow, error-prone methods of entering data into mobile computers. If the data to be entered is bar coded, using a laser scanner is 50 times faster and 10,000 times more accurate than manual data entry.



Socket's CF Scan Card 5E brings a new level of affordability and convenience to mobile data collection with Socket's Mobility Friendly™ CompactFlash technology. Just plug the card into your Windows-based mobile computer, launch the included SocketScan™ software, and read bar code data into any Windows application as if it had been typed on a keyboard.

Mobility Friendly Means Low Power

Socket designed the Mobility Friendly CF Scan Card to use minimal power. Drawing only 4 mA (13 mW) in idle mode, the CF Scan Card lets you operate for hours without having to replace or recharge your mobile computer's batteries.



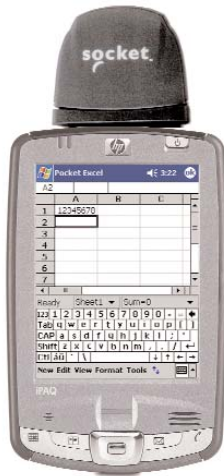
FEATURES

- Type II CF card with integrated scanner plugs into Type II CompactFlash slot of a Pocket PC or mobile computer
- With CompactFlash-to-PC Card adapter (SKU# AC4001-515), works in PC Card (PCMCIA) slot of devices mentioned above (if applicable) or a Windows XP notebook*
- One-handed operation with a Pocket PC or mobile computer improves efficiency
- Uses state-of-the-art CMOS imaging technology
- Automatically decodes the most popular bar code symbologies, including UPC, EAN, Code 39, Code 128, Interleaved 2 of 5, Code 93, and more
- LED light source poses no safety or health hazards
- SocketScan keyboard emulation software works on Windows Mobile for HPC 2000 or Pocket PCs as well as Windows XP
- SocketScan allows the user to add Prefix and/or Suffix functions, such as Carriage Return and Tab, to further eliminate manual keystrokes
- SocketScan enables you to assign a scanner trigger button, and also a beep tone or .WAV file to signify a successful scan
- Any of 18 bar code symbologies can be easily enabled/disabled with SocketScan's "Symbology Selector"
- SocketScan "Scan Demo" reports symbology, length and decoded data (in ASCII or Hex) of any scanned bar code (of 18 supported symbologies)
- Two year warranty
- No extra batteries or special power adapter required — the CFSC 5E gets power from the mobile computer
- SDK for mobile computers available to application developers
- Works with Windows-based development tools so you can easily create custom applications
- Socket Floating Trigger for Windows Mobile puts an icon on your Pocket PC screen that you can tap to trigger the scanner



Socket CompactFlash Scan Card 5E

Product # IS5024-608



Learn about Vertical Solutions featuring the CF Scan Card:
www.socketcom.com/solutions/

Additional Product Information:

Website: www.socketcom.com

Email: info@socketcom.com

FTP: [ftp.socketcom.com](ftp://ftp.socketcom.com)

Sales Offices:

Corporate Headquarters:

Phone: 510-744-2700

Domestic Toll Free: 800-552-3300

Fax: 510-744-2727

Email: www.socketcom.com/contact



Corporate Headquarters:

Socket Communications, Inc.
37400 Central Court, Newark, CA 94560

Phone: 510-744-2700

Fax: 510-744-2727

www.socketcom.com

SPECIFICATIONS

Physical Characteristics:

CF Card Size: 43 x 43 x 5 mm

Scanner Head Size: 83 x 51 x 20 mm

Total Mass: approx. 28 g

Power Consumption (with 3.3V):

Idle: 4 mA (13 mW)

Scanning: 40 mA

Bar Code Symbologies Decoded:

Code 39, UPC/EAN, MSI/Plessey,

Code 128, Code 93, Codabar,

Interleaved 2 of 5, Discrete 2 of 5,

Code 11

Operating System Support:

- Windows Mobile for Pocket PC

2000/2002/2003 and HPC 2000

- Windows XP

Compatibility: Windows COM Port

Scanner Performance:

Decode Distances:

1.5 to 24+ inches (depending on symbol size, symbology, label media, W-N Ratio, and scan angle)

Environmental Conditions:

Operating Temp:

-4° to 131° F (-20° to 55° C)

Storage Temperature:

-40° to 140° F (-40° to 60° C)

Humidity: 5-95% non-condensing

Warranty: Two years

Certification:

FCC: Part 15, Class B

CE: EN55024:1998, C-TICK s.182

CompactFlash Spec. 2.0

Interface Standards:

- CompactFlash (CF) Type II

- PC Card (PCMCIA) with Type II

CF-to-PC Card adapter, available separately: Product # AC4001-515)

Included Software:

- Installation utility

- SocketScan™ with keyboard emulation for Windows Mobile, XP

- Socket Floating Trigger for Windows Mobile

SocketScan™ Software:

- Reads bar code data into any Windows application as if manually typed

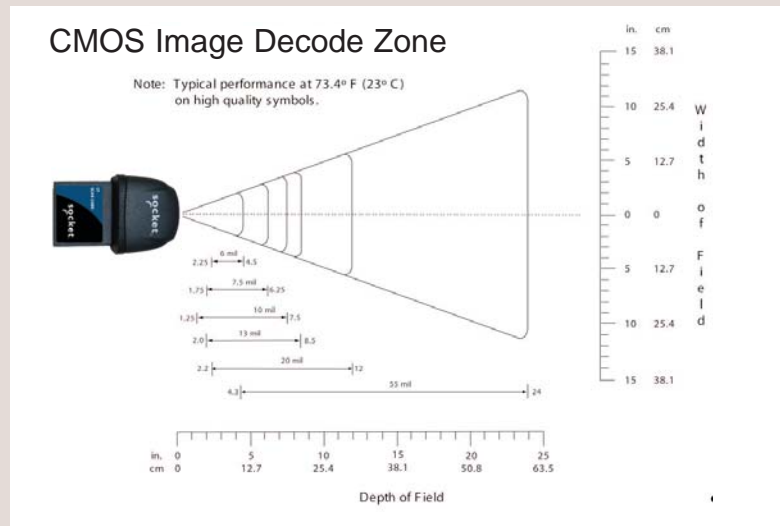
- Lets you add Prefixes and/or Suffixes (e.g., Carriage Return) to further reduce manual keystrokes

- Lets you assign a beep tone or .WAV file to signify a good scan

- Lets you easily enable/disable any of 18 common symbologies

- Scan Demo reports symbology, length and decoded data (in ASCII or Hex) of any scanned bar code (for 18 supported symbologies)

- SDK available for developers



© 2005, Socket Communications, Inc. Socket Communications, Socket, CompactFlash Scan Card, SocketScan and Mobility Friendly are registered trademarks or trademarks of Socket Communications, Inc. Microsoft and Windows are either registered trademarks or trademarks of Microsoft Corporation in the United States and/or other countries. All other brand and product names are trademarks of their respective holders.