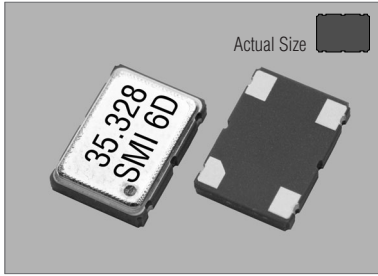
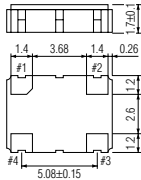
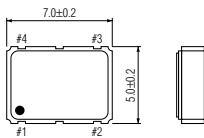


97SMOV

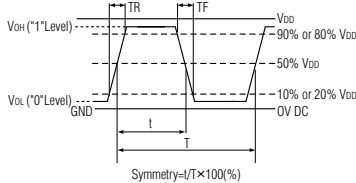


97SMOV

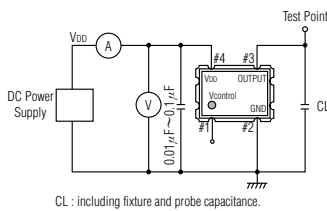


PIN	CONNECTION
1	V _{control}
2	GND
3	OUTPUT
4	V _{DD}

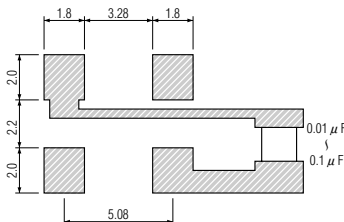
OUTPUT WAVEFORM



TEST CIRCUIT



SOLDERING PATTERN



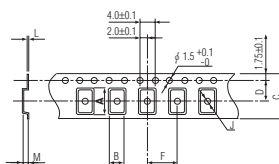
STANDARD SPECIFICATIONS

Item	Specifications	
	97SMOV(3.3V)	97SMOV(5V)
Generic part number	97SMOV(3.3V)	97SMOV(5V)
Frequency range	2.000 MHz to 54.000 MHz	
Frequency stability (-20°C to +70°C)	97SMOV(3.3VA) : ±50 ppm 97SMOV(3.3VB) : ±30 ppm 97SMOV(3.3VC) : ±25 ppm	97SMOV(5VA) : ±50 ppm 97SMOV(5VB) : ±30 ppm 97SMOV(5VC) : ±25 ppm
over all conditions	V _{con} = +1.65V	V _{con} = +2.5V
Frequency pulling range	±100ppm min (V _{con} = +1.65V ±1.35V)	±100ppm min (V _{con} = +2.5V ±2.0V)
Frequency change vs. input voltage	±5.0ppm max. (V _{DD} = +3.3V DC ±5%)	±5.0ppm max. (V _{DD} = +5V DC ±10%)
Operating Conditions	-20°C to +70°C	
Operating temperature	-20°C to +70°C	
Input voltage (V _{DD})	+3.3V DC ±5%	+5V DC ±5%
Control voltage (V _{con} = Pin#1)	+1.65V DC ±1.35V	+2.5V DC ±2.0V
Absolute Max. Ratings	-40°C to +85°C	
Supply voltage	-0.3V to +5.5V DC	-0.3V to +7.0V DC
Storage temperature	-40°C to +85°C	
Input current (no load)	10 mA max. (2 MHz to 20 MHz) 15 mA max. (20 MHz to 30 MHz) 20 mA max. (30 MHz to 40 MHz) 25 mA max. (40 MHz to 54 MHz)	15 mA max. (2 MHz to 20 MHz) 20 mA max. (20 MHz to 30 MHz) 25 mA max. (30 MHz to 40 MHz) 30 mA max. (40 MHz to 54 MHz)
Output (-20°C to +70°C)	45% to 55% at 50%V _{DD} level 10 ns max. (2.0 MHz to 10.0 MHz) 6 ns max. (10.0 MHz to 54.0 MHz)	
Symmetry	VOL : 10%V _{DD} max. VOH : 90%V _{DD} min.	
Rise and fall times (10%V _{DD} to 90%V _{DD} level)	15 pF max. (CMOS)	
"0" level	10ms max.	
"1" level	10% max.	
Load	Positive	
Startup time	-130 dBc/Hz max. Typical at 1kHz offset	
Frequency linearity	±5 ppm max. at +25°C ±3°C for first year	
Frequency slope	+250°C ±10°C for 10 seconds +170°C ±10°C for 1 to 2 minutes (preheating)	
SSB phase noise		
Aging		
Reflow condition		

PACKAGE DATA

Item	Package	97SMOV
Lid		Metal
Base		Ceramic
Sealing		Seam
Terminal		Tungsten (metalized)
Terminal plating		Gold / Nickel (surface) / (under)
RoHS		Compliant (Pb-free)

TAPE SPECIFICATIONS



A	B	C	D	F	J	L	M	Reel Dia.	Qty/Reel
7.5	5.5	16.0	7.5	8.0	2.0	0.3	2.2	200 254	1000pcs 2000pcs

VCXO